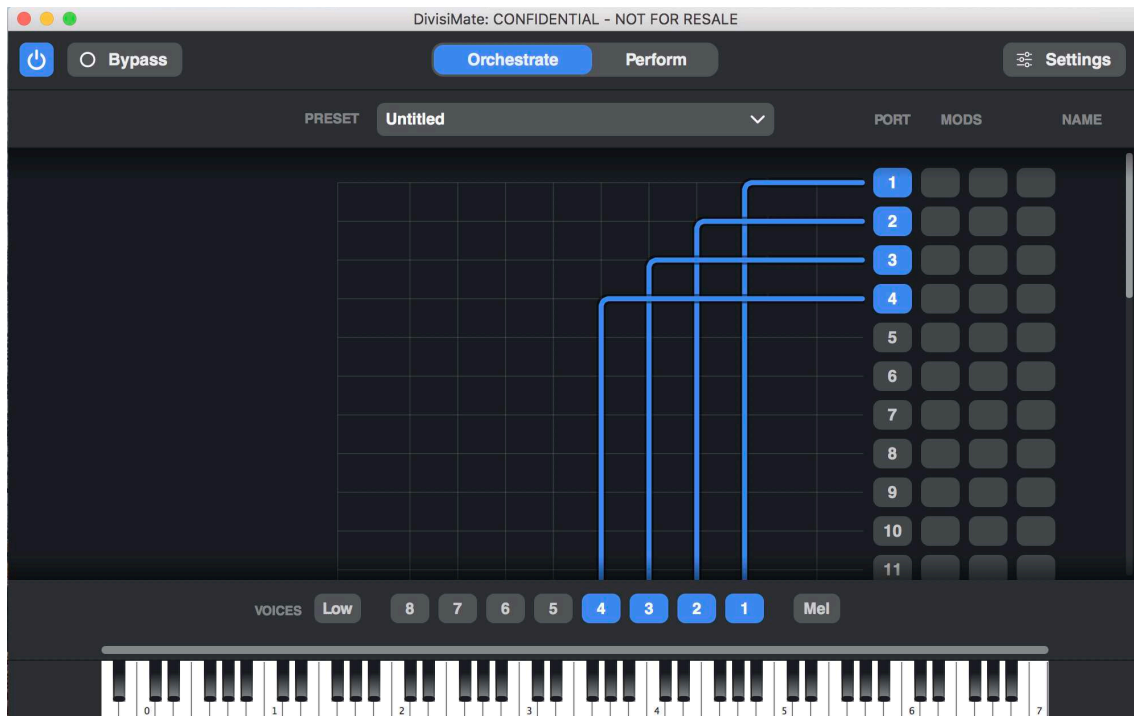


DIVISIMATE QUICKSTART GUIDE FOR STUDIO ONE

To connect Divisimate with Studio One you need to do the following:

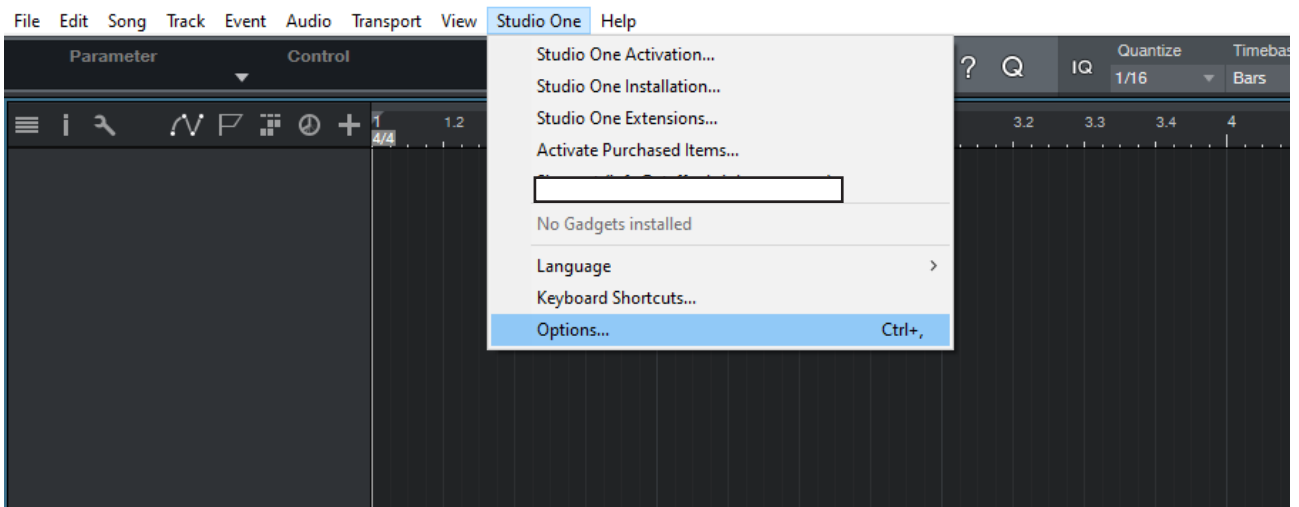
Setup Divisimate

- 1) On MacOS: Open Divisimate first (the virtual midi ports are only available when Divisimate is running).
- 2) Activate 4 voices in the lower part of the GUI above the keyboard by clicking on '4' and connect the 4 voices to the first 4 Out-Ports on the left by clicking in the matrix.

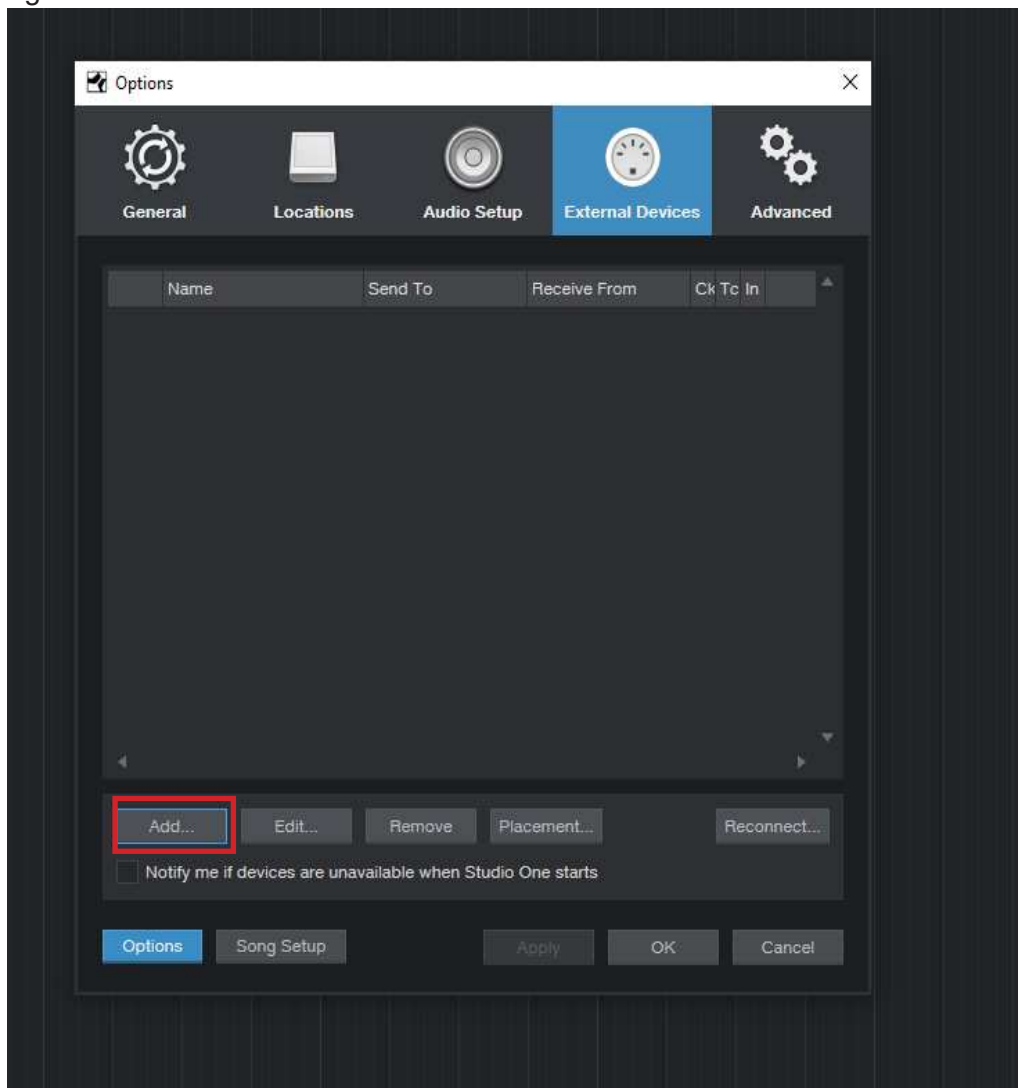


Setup Studio One

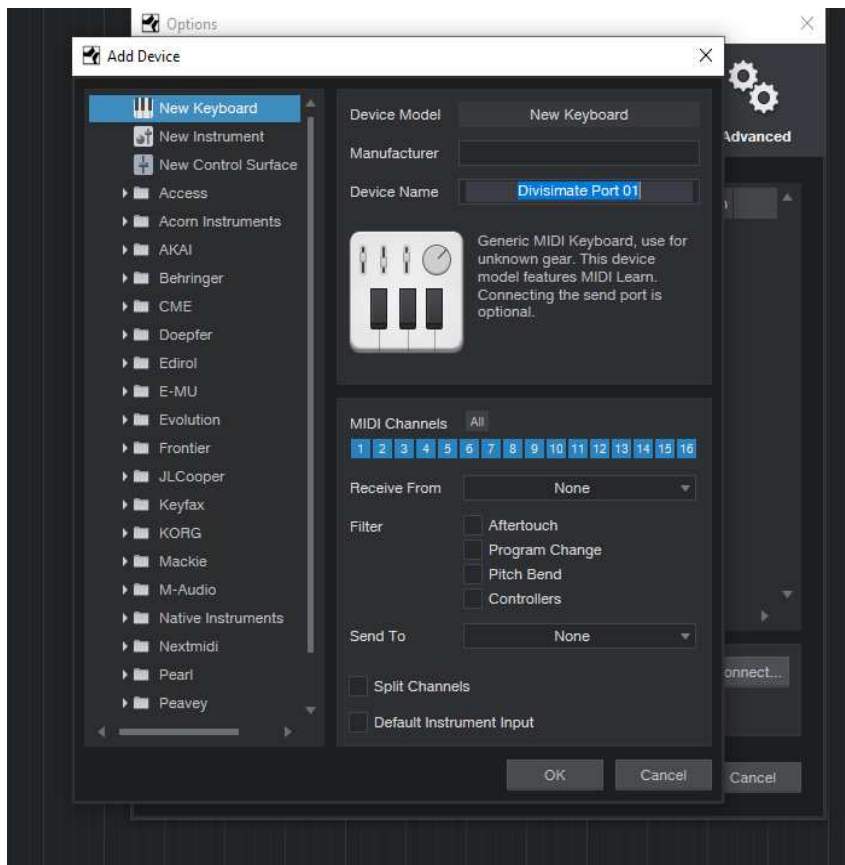
1) Open a new session in Studio One and open the “Options...”-Panel.



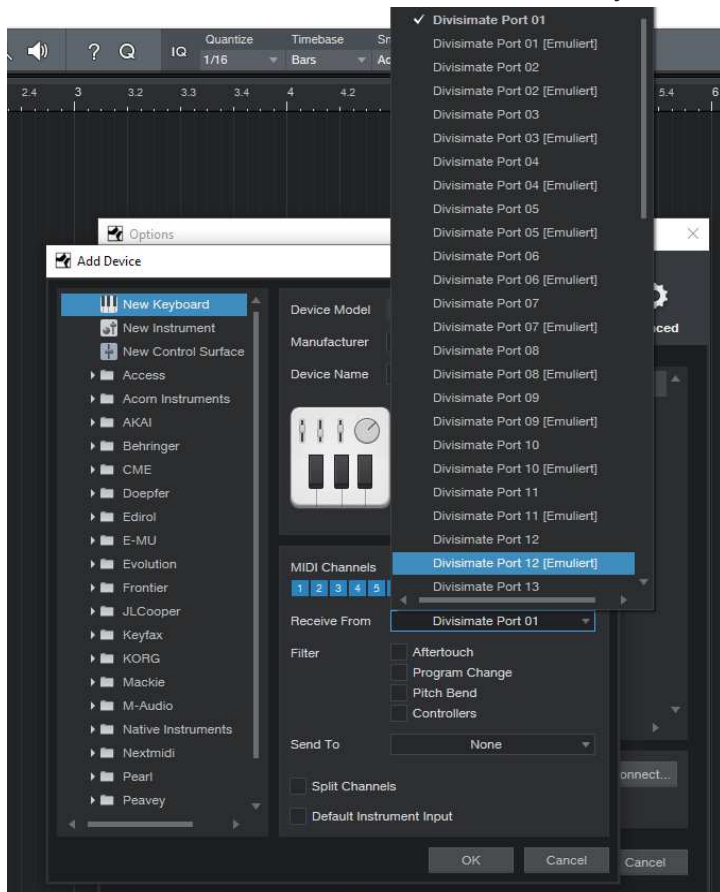
2) Navigate to the “External Devices” and click on “Add...”



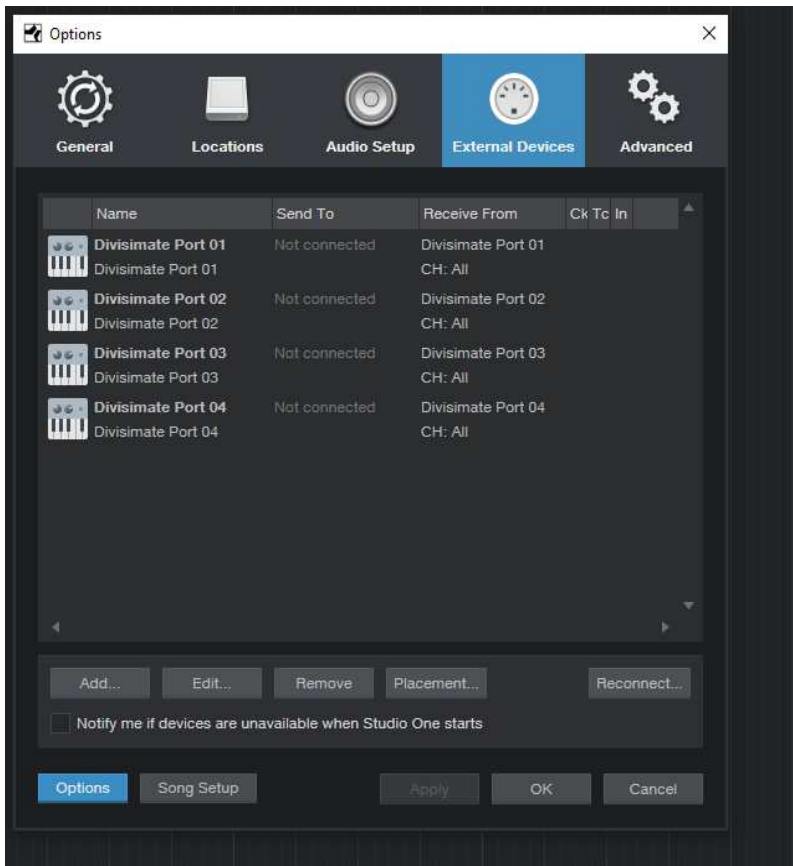
3) Select “New Keyboard” and type in the Port Name under “Device Name”



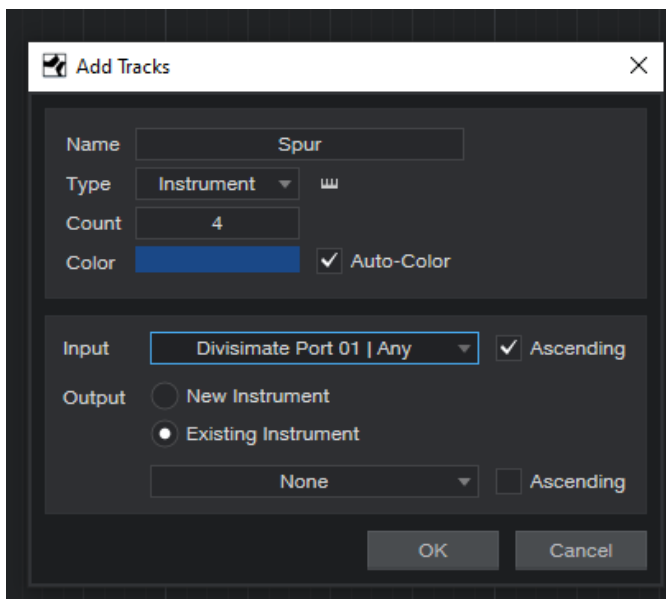
4) Under “Receive from” select the Divisimate Port you are setting up, in this case Divisimate Port 01



5) Repeat this process for every Divisimate Port you want to use, we're adding 4 ports here.



6) Go back to your project and add 4 instrument tracks. Select Divisimate Port 01 as Input and click "Ascending" to automatically assign different Ports to each track.



7) Load instruments into each track and have fun playing and composing!

